

# How to Make an Aurasma from the iPad.

*These instructions provide details on how students can create Aurasma's on their ipads and how to load them to the teacher channel for easy access.*

*Before you begin...*

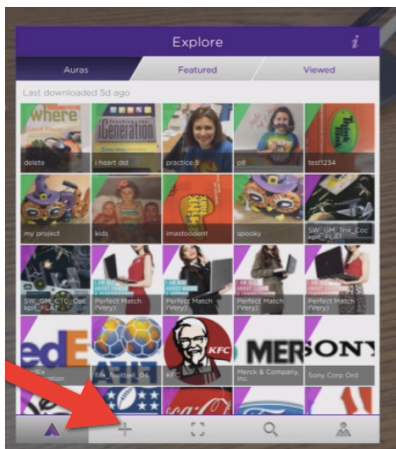
- Make sure you have created an Aurasma channel for users to follow.
- Make sure the iPad is logged into your Aurasma account so that the finished version can be added to your channel.
- Make sure your "aura" is in your camera roll before and added to the create area of Aurasma before you begin.
- Note: In order for your Aurasma to be viewed, the user of any device must follow your channel

## **1. Open Aurasma**

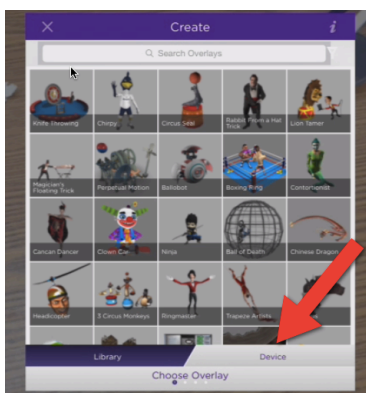
**Click on the Aurasma icon at the bottom of the screen.**



## **2. Click on the + sign**

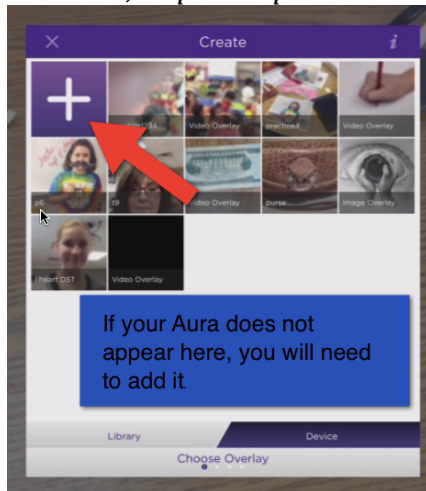


## **3. Select the Device tab**

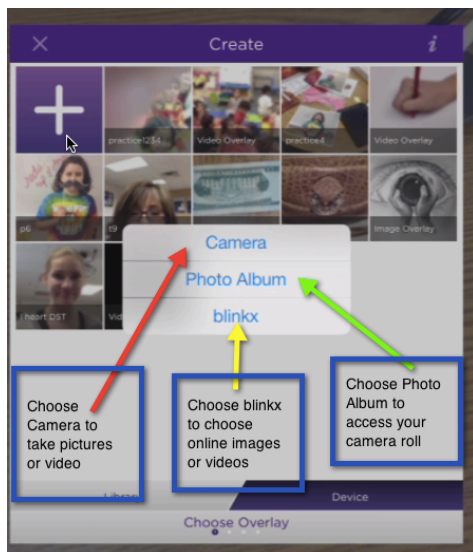


#### 4. Add Aura to Aurasma. Click the + Sign to add your aura

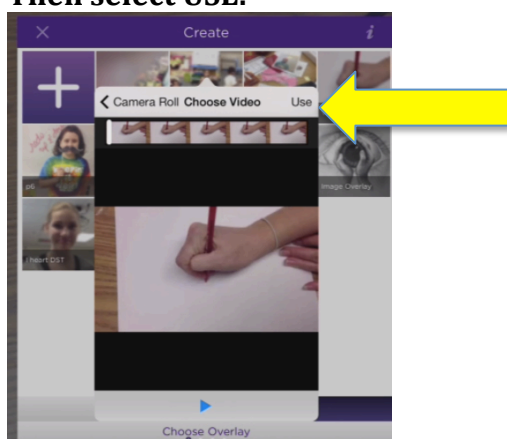
*Note: You need to make sure that the “aura” has already been placed in the camera roll of the iPad so you can add it to Aurasma. If the video has already been added to Aurasma, skip to step 6.*



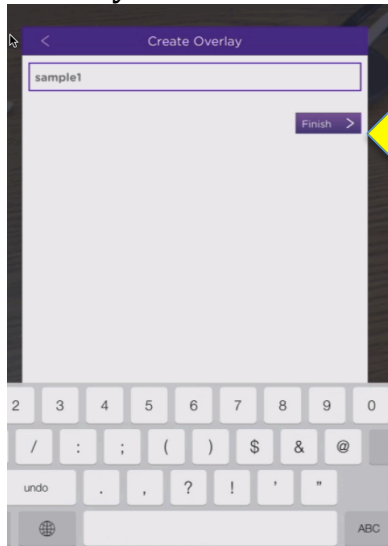
#### 5. Choose Photo Album ( if your aura is in your camera roll) or choose Camera to make a video within Aurasma



#### 6. Choose the video you want to appear when your image is scanned. Then select USE.

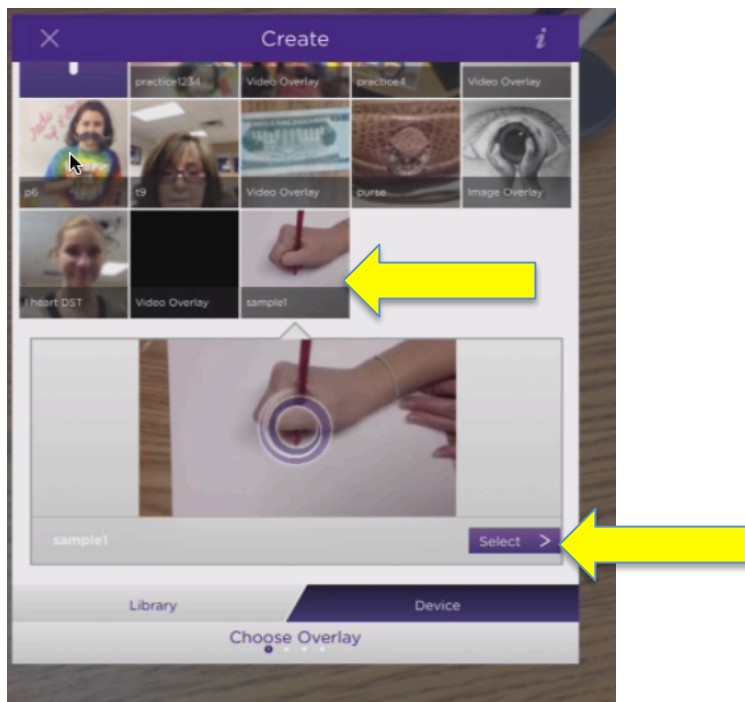


## 7. Give your aura a name and click finish

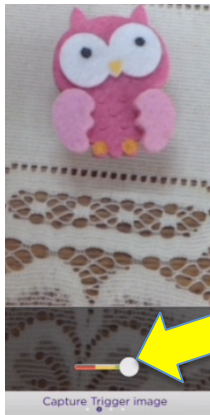


## 8. Now you need to activate your aura and select your trigger.

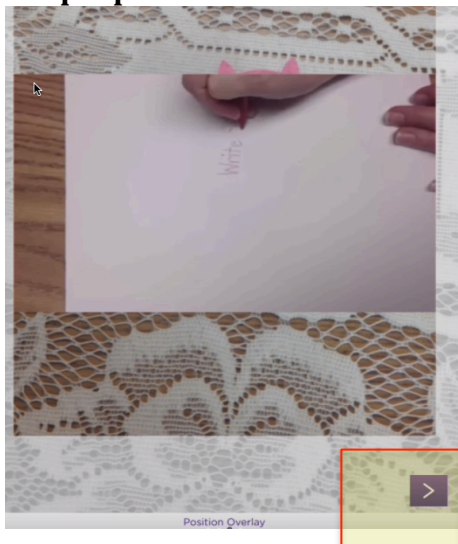
Tap on the movie you just loaded from the clip selection to activate the aura then tap select.



**9. Take your picture that will trigger the aura ( make sure the quality slider is in the green zone!)**

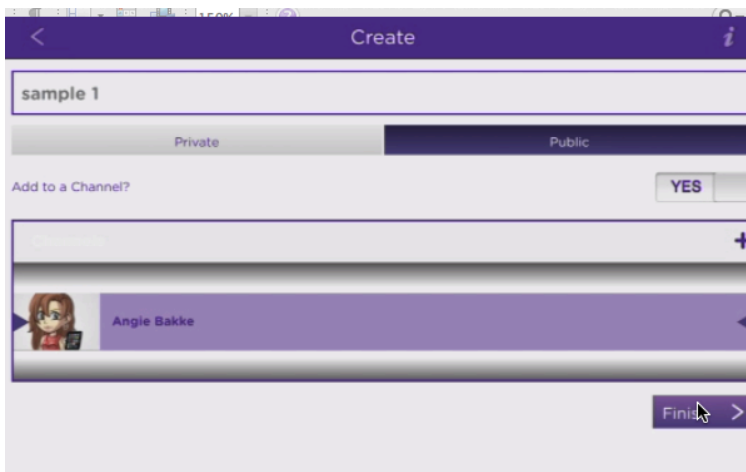


**10. Position how you would like your aura to located on the image. Click on the purple arrow.**



**11. Almost done...**

Assign the aura a name. Choose Public. Answer YES to add to a channel. Select the channel where the aura is to appear. Click Finish. Your aura is now ready to be viewed.



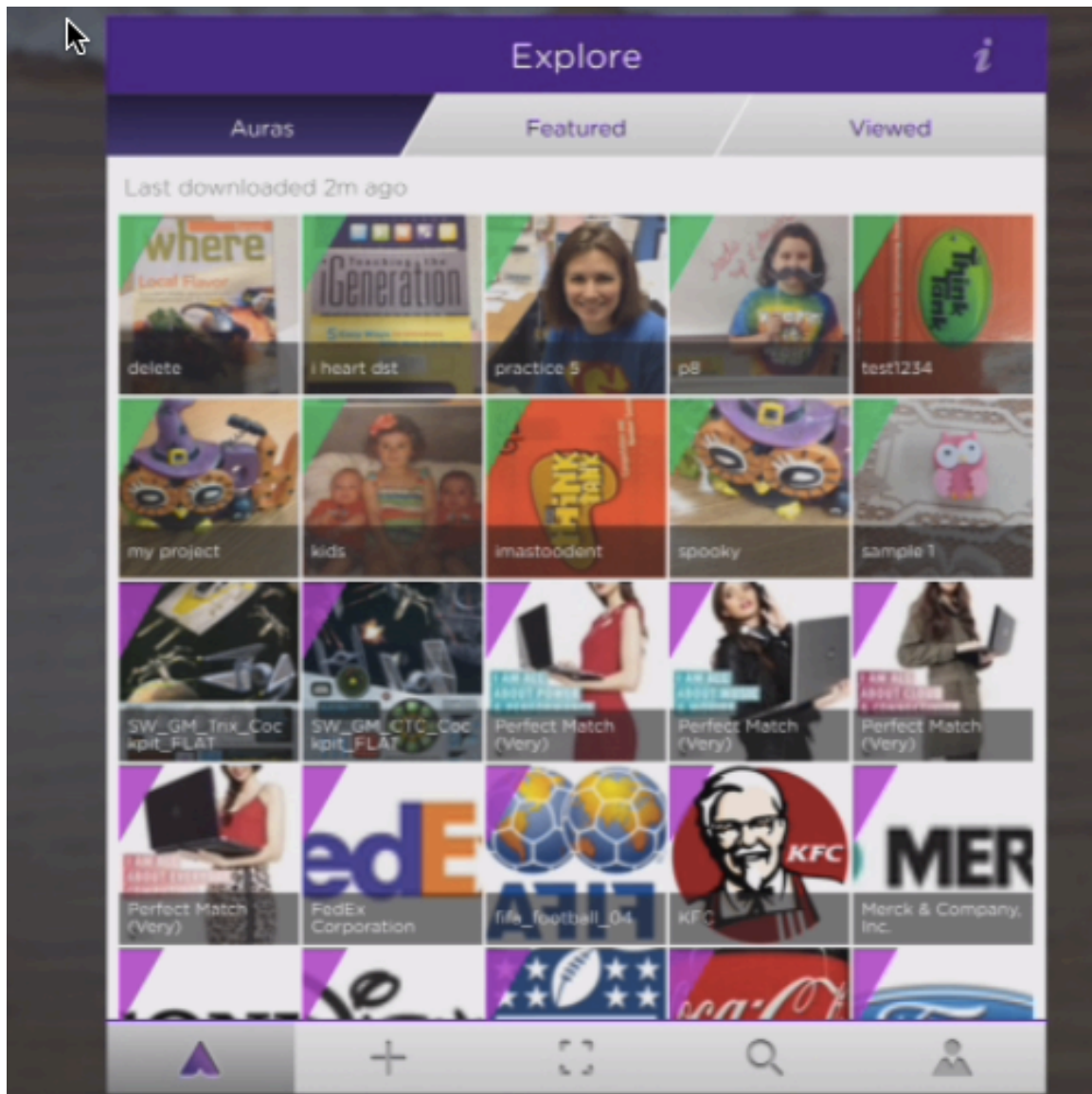
# To View An Aurasma

Once you have set your Channel to "Public" in the Aurasma Studio, your content is ready to be viewed. All you and your users need to do is 'follow' your Channel in the Aurasma app.

Steps:

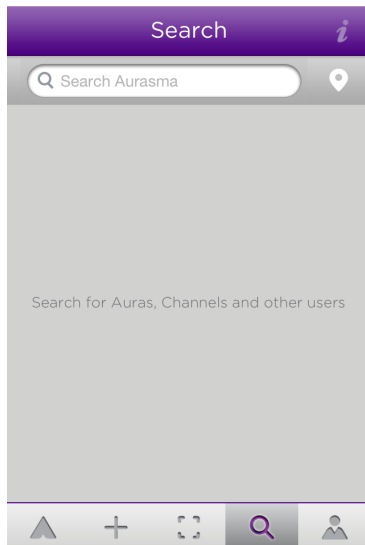
1. Launch the Aurasma app. You will be taken to the viewfinder, which also has our Aurasma menu, marked by our 'A' icon in the middle of the lower portion of the screen.

Example:



2. Click the Aurasma 'A' menu icon. You will notice a series of options along the bottom.

3. Choose the "Search" icon, which is designated by the magnifying glass. See below:



4. Type in the name of a "Public" Channel. A list of relevant searches will pop up.

5. Locate your Channel and press "Follow."

After pressing "Follow," a pop up will appear alerting you that you are now following the desired Channel. Simply go back to the viewfinder and you are ready to view all of the content in that Channel! Best part? You can add, edit, or delete an Aura at any time in your Aurasma Studio account, and the device that is already subscribed will automatically take the update.

---